

## Shaft

Wall Thickness	0.226" (5.74 mm)
Round HSS Outside Diameter	4" (101.6 mm)
Available Standard Lengths	5'-3" (1.6 m) / 7'-0" (2.1 m) / 10'-6" (3.2 m)

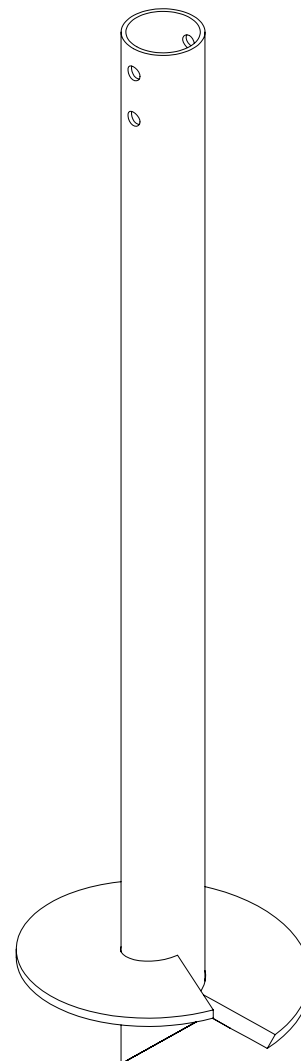
## Load Specifications

Max. Installation Torque	11,000 ft-lb (14,902 N-m)
Max. Allowable Capacity*	36 kips (160 kN) to 45 kips (200 kN)

\* Higher load ratings could be considered with site-specific engineering.

## Technical Specifications

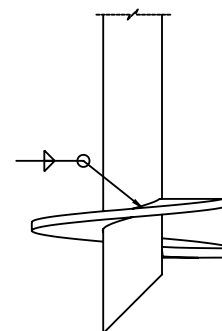
Commonly Used Structure	Heavy Residential
	Light to Medium Commercial
	Industrial
Standard Steel	ASTM A500 Grade C Fy=51 ksi min (350 MPa)
Black Steel Design Life	50 years per AC358
Coating	Galvanized or Black Steel
Galvanization Compliance	ASTM A123/A123M
Additional Corrosion Protection	Cathodic Protection System available



## Helix

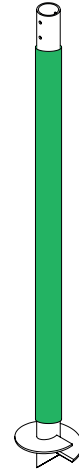
Pitch	3" (76.2 mm) / 5" (127 mm)
Thickness	0.5" (12.7 mm)
Standard Steel	CSA G40.21-44W Fy=44 ksi min (300 MPa)
Coating	Galvanized or Black Steel
Multiple Welded Helix	Available
Helix Size*	8" (203 mm) to 24" (610 mm)

\* Other sizes available upon request.

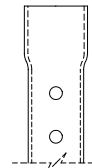
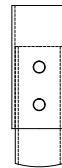
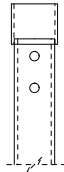


## Sleeve (Available)

Function Utility	Protection against soil movements
Wall Thickness	1/16" (1.6 mm)
Outside Diameter	± 4.25" (± 108 mm)
Length	± 66" (± 1.67 m)
Weight	± 1.61 lb (± 0.73 kg)
Material	HDPE
Color	Green



## Outside Couplings



	Regular	Reinforced	Expanded
Assembly	Welded	Welded	-
Wall Thickness	0.237" (6.02 mm)	0.237" (6.02 mm)	0.201" (5.11 mm)
Round HSS Outside Diameter	4.5" (114.3 mm)	4.5" (114.3 mm)	4.5" (114.3 mm)
Standard Steel	ASTM A500 Grade C Fy=51 ksi min (350 MPa)	ASTM A500 Grade C Fy=51 ksi min (350 MPa)	ASTM A500 Grade C Fy=51 ksi min (350 MPa)
Length*	3.5" (88.9 mm)	8.75" (222.3 mm)	2.7" (68.5 mm)

\* Factory welded outside coupling length or on site.

## Pile Caps

Wood Structure Connectors	Pages 64, 65
Steel Structure Connectors	Page 63
Concrete Construction Connectors	Pages 63, 70, 71